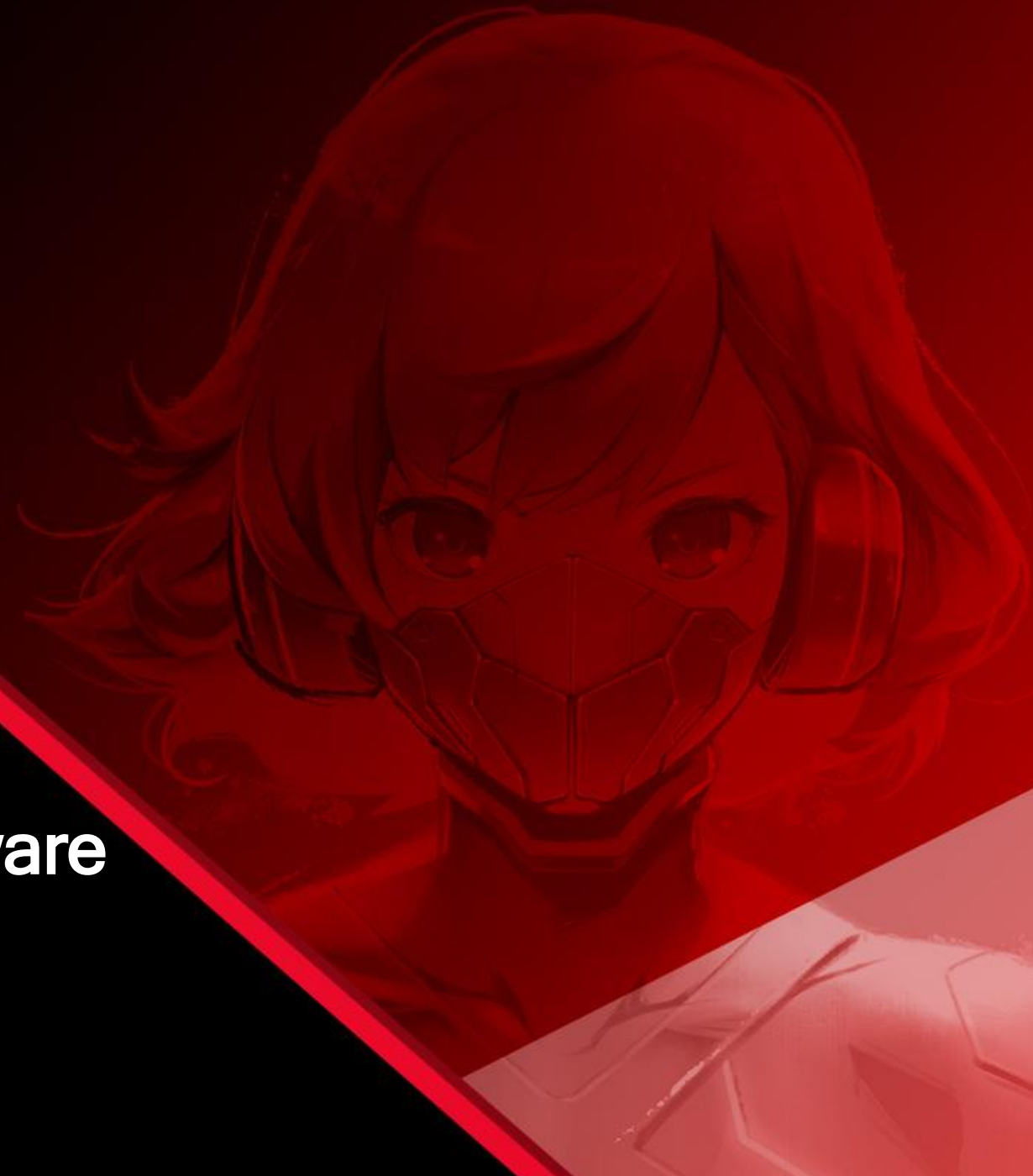




How to Update SSD Firmware

2021 | 10 | 26



How to update SSD firmware

Execute ADATA SSD ToolBox. Select the updated SSD.

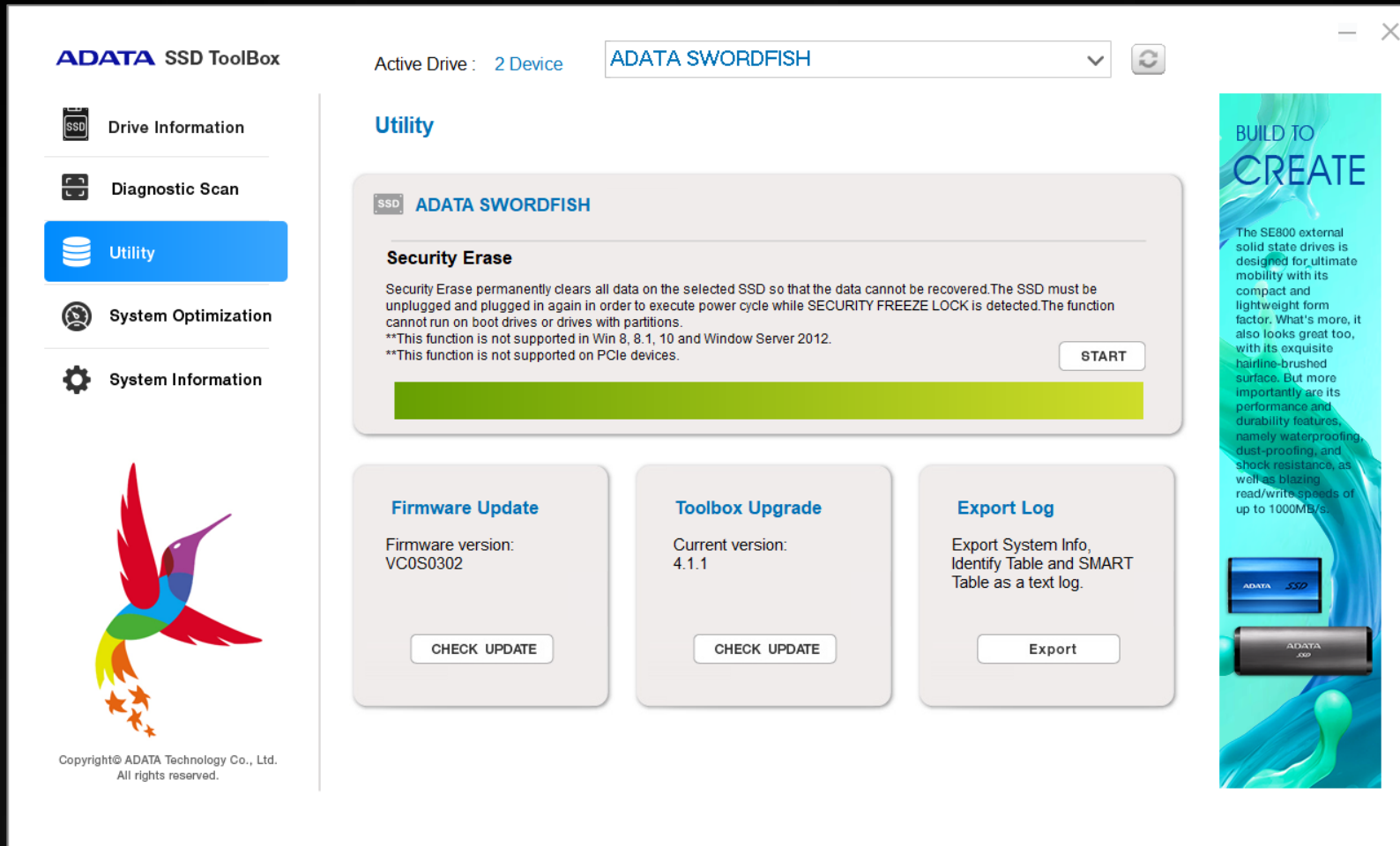
The screenshot displays the ADATA SSD Toolbox application. On the left is a sidebar with navigation options: Drive Information (selected), Diagnostic Scan, Utility, System Optimization, and System Information. Below the sidebar is the ADATA logo and copyright information. The main area shows 'Active Drive : 2 Device' with a dropdown menu currently displaying 'ADATA SWORDFISH' and a list of available drives including 'ADATA SU800' and 'ADATA SWORDFISH'. Two drive detail panels are visible:

- ADATA SU800 | SATA:** Drive Health is 'Good', Temperature is 27 °C, and Remaining lifetime is 100 %. It shows 42.8 GB used and 433.5 GB free. Technical details include ModelName: ADATA SU800, Firmware version: 02K0S86D, Serial number: 2L062LQ877NC, WWN: 5707C18100A057EC, Connection speed: SATA 6.0 Gb/s, and Total Bytes Written: 1.59TB.
- ADATA SWORDFISH | PCIe:** Drive Health is 'Good', Temperature is 32 °C, and Remaining lifetime is 100 %. It shows 0.1 GB used and 465.6 GB free. Technical details include ModelName: ADATA SWORDFISH, Firmware version: VC0S0302, Serial number: 2L032LQK7CCL, WWN: 0000000000000000, Connection speed: PCIe Gen3 x4, and Total Bytes Written: 0.02TB.

On the right side of the interface is a vertical banner with the text 'BUILD TO CREATE' and 'THE BUILDING BLOCKS OF A CREATOR', featuring a quote from Alex, a National Geographic Explorer and filmmaker, and a 'Learn more' link.

How to update SSD firmware

Click “Utility” page, and click Firmware Update / “CHECK UPDATE”.



The screenshot displays the ADATA SSD Toolbox interface. On the left, a sidebar contains navigation options: Drive Information, Diagnostic Scan, Utility (highlighted in blue), System Optimization, and System Information. The main area is titled 'Utility' and shows 'Active Drive : 2 Device' with a dropdown menu set to 'ADATA SWORDFISH'. Below this, the 'Security Erase' section is visible, followed by three update-related buttons: 'Firmware Update' (with a 'CHECK UPDATE' button), 'Toolbox Upgrade' (with a 'CHECK UPDATE' button), and 'Export Log' (with an 'Export' button). The 'Firmware Update' section shows the current version as 'VC0S0302'. On the right side of the interface, there is a vertical banner for the ADATA SE800 external solid state drive with the text 'BUILD TO CREATE' and a description of its features.

ADATA SSD Toolbox

Active Drive : 2 Device | ADATA SWORDFISH

Utility

Security Erase

Security Erase permanently clears all data on the selected SSD so that the data cannot be recovered. The SSD must be unplugged and plugged in again in order to execute power cycle while SECURITY FREEZE LOCK is detected. The function cannot run on boot drives or drives with partitions.

**This function is not supported in Win 8, 8.1, 10 and Window Server 2012.

**This function is not supported on PCIe devices.

START

Firmware Update

Firmware version: VC0S0302

CHECK UPDATE

Toolbox Upgrade

Current version: 4.1.1

CHECK UPDATE

Export Log

Export System Info, Identify Table and SMART Table as a text log.

Export

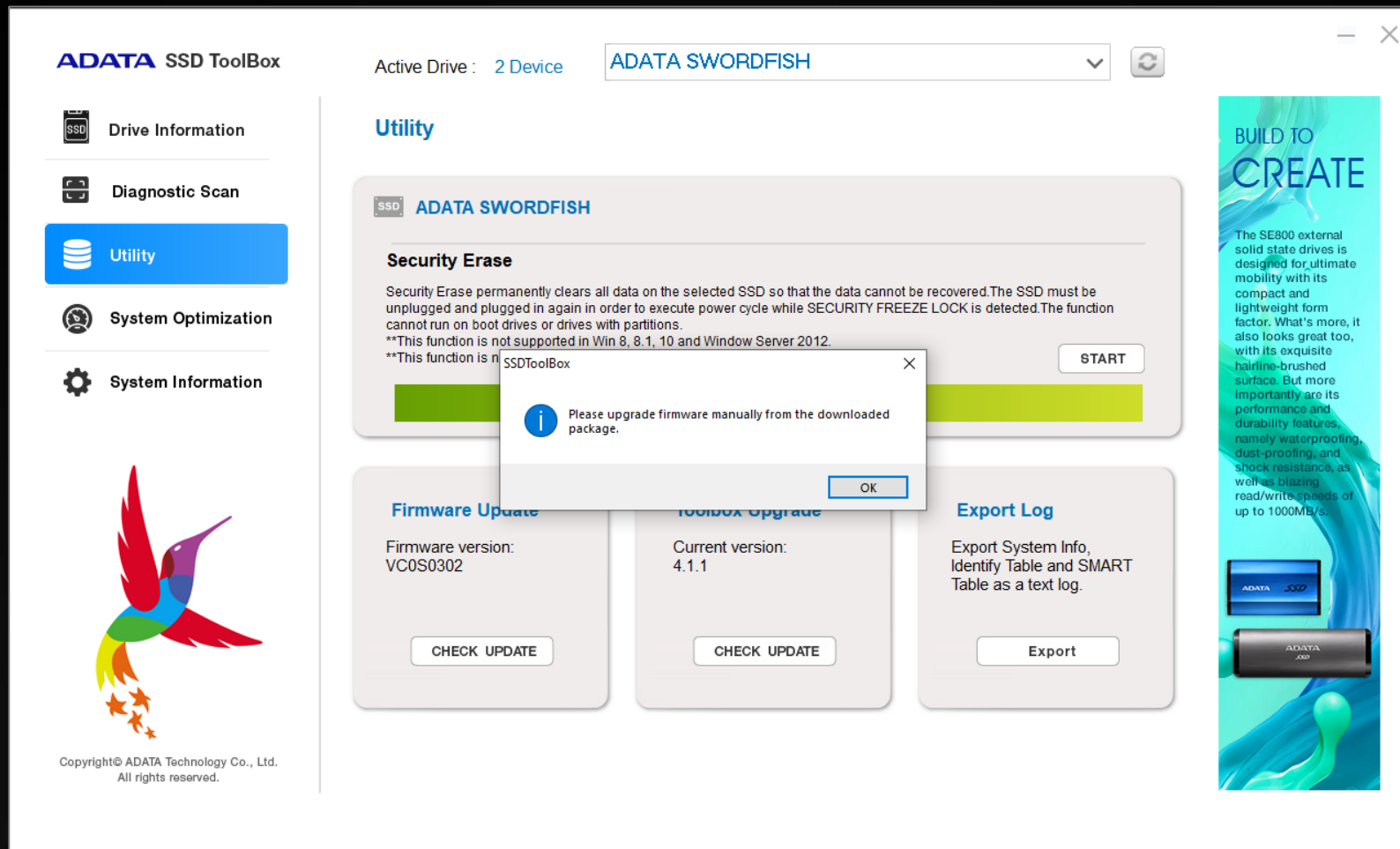
BUILD TO CREATE

The SE800 external solid state drives is designed for ultimate mobility with its compact and lightweight form factor. What's more, it also looks great too, with its exquisite hairline-brushed surface. But more importantly are its performance and durability features, namely waterproofing, dust-proofing, and shock resistance, as well as blazing read/write speeds of up to 1000MB/s.

Copyright© ADATA Technology Co., Ltd. All rights reserved.

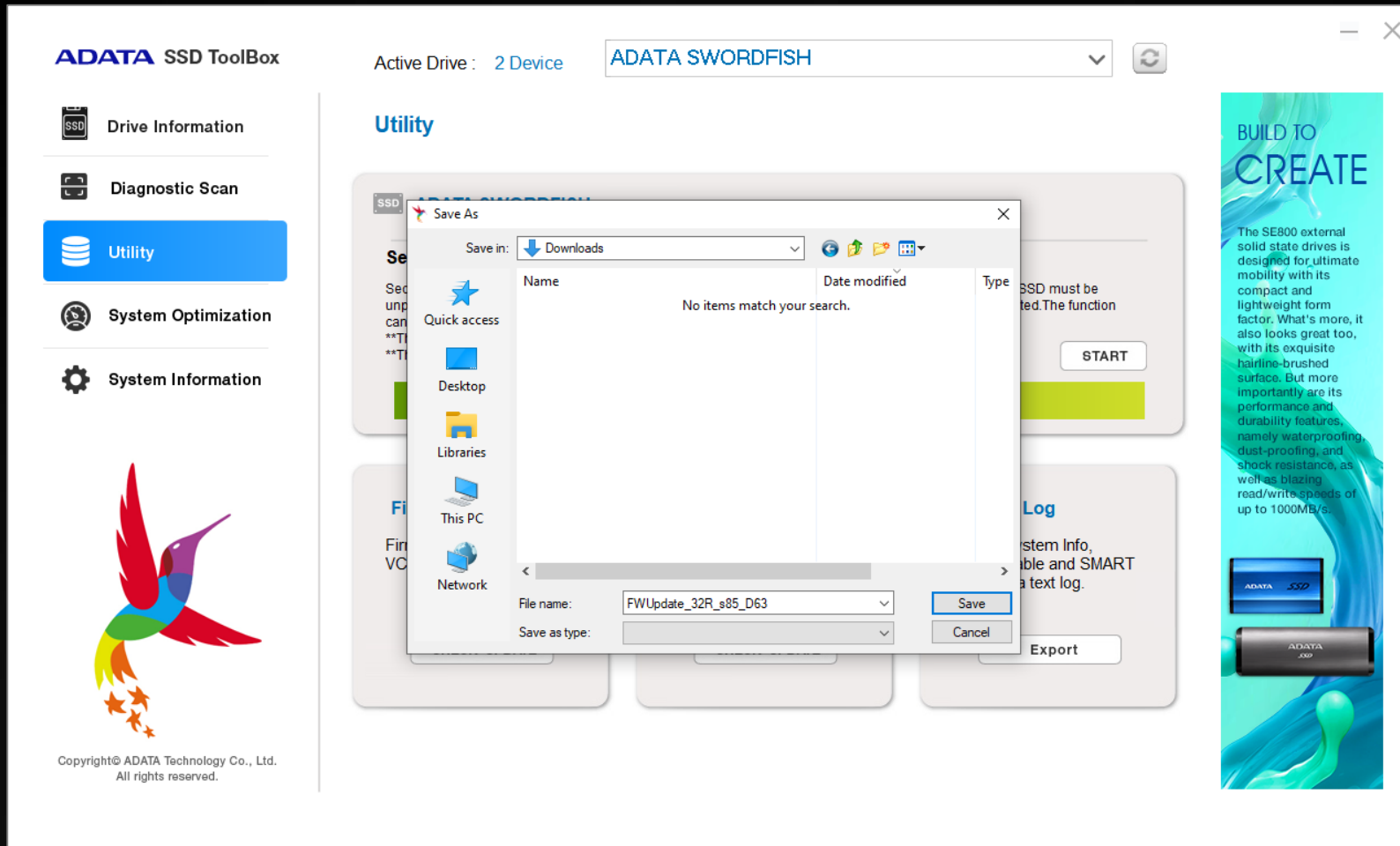
How to update SSD firmware

When window pop up, please click “OK”.



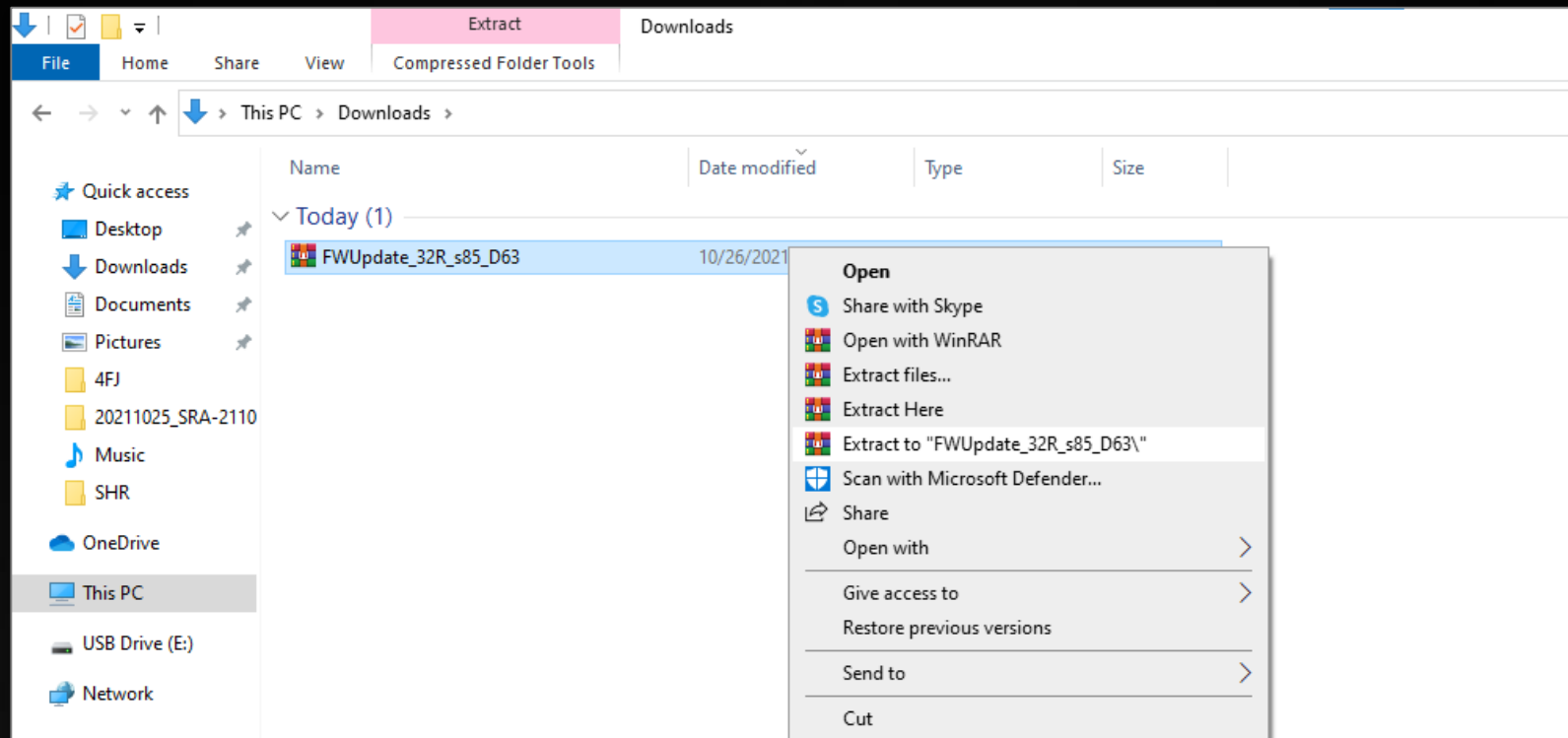
How to update SSD firmware

Select the save path and click “Save”.



How to update SSD firmware

Extract firmware updater and follow user guide to update firmware.

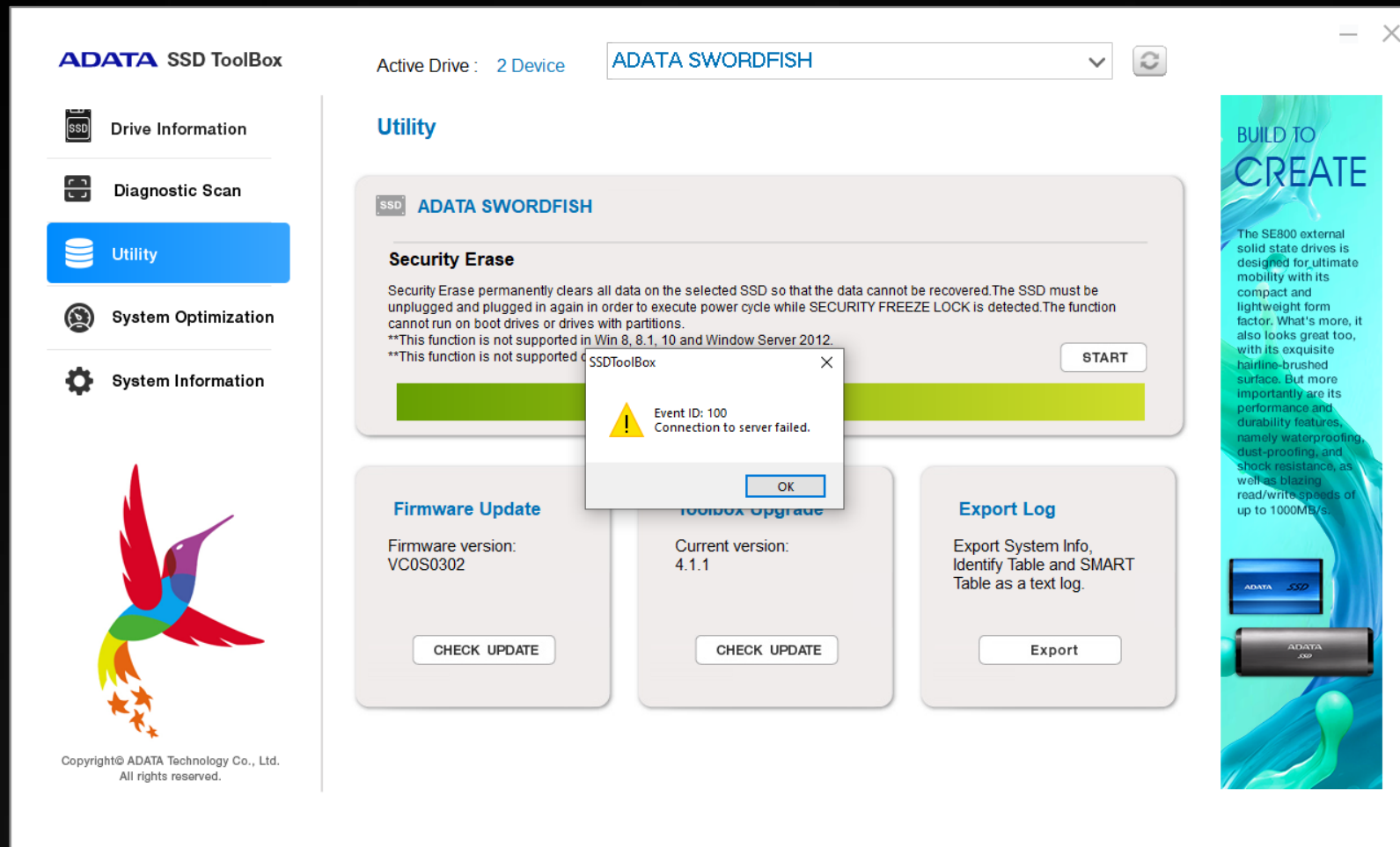


TROUBLESHOOTING



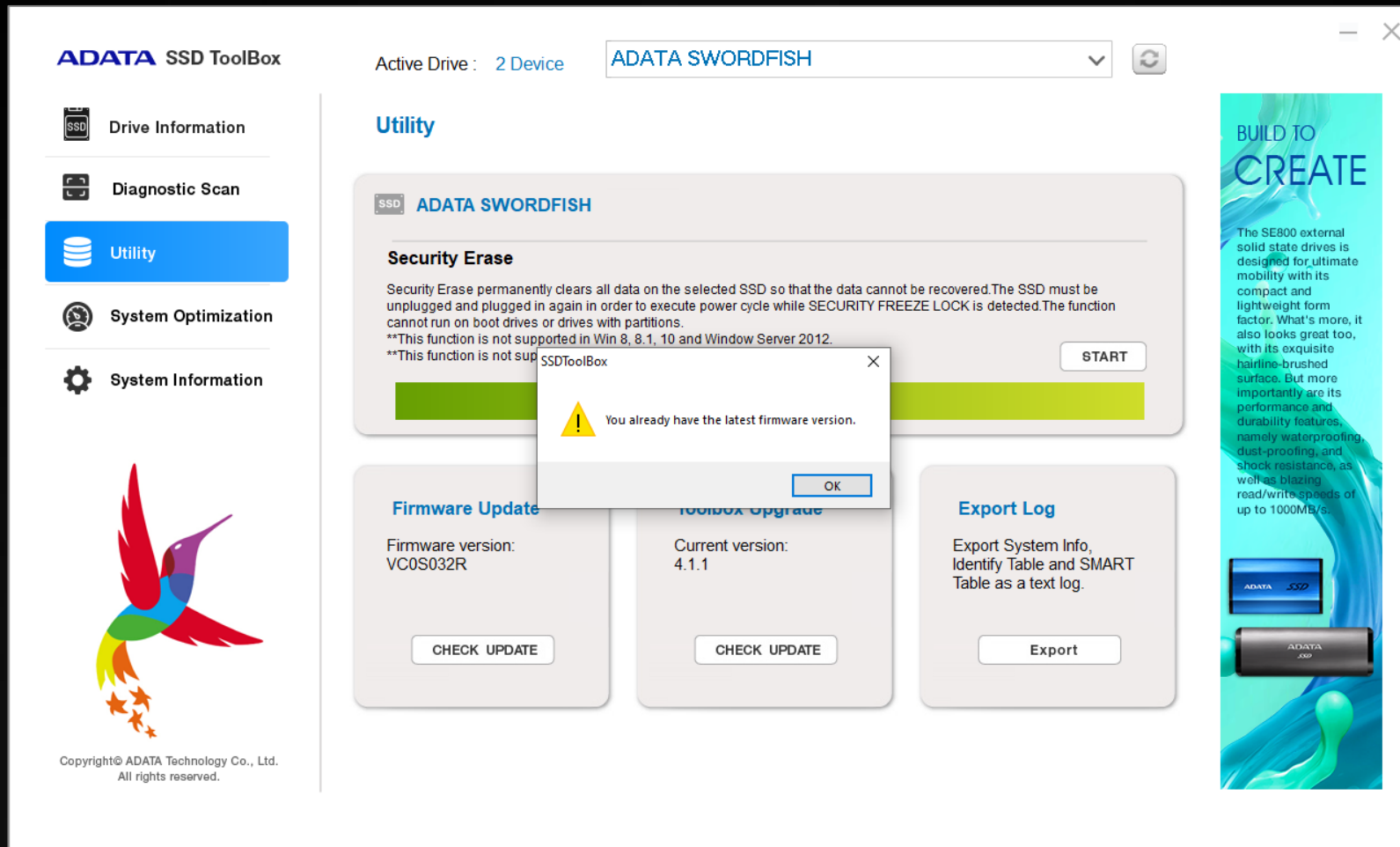
Condition 1 : Connection to server failed

Please confirm your internet connection first.



Condition 2 : You already have the latest firmware version

You already have the latest firmware version, no need to update.





XTREME **P**ERFORMANCE **G**EAR