

## LIMITED WARRANTY STATEMENT

This Warranty does not apply to defects or damages to Products caused by human error-related factors or any other non-ordinary factors, including but not limited to:

- A. Malfunctions or damages caused by force majeure such as natural calamity or any inappropriate use by any person.
- B. Product has been repaired or taken apart by unauthorized technicians.
- C. Warranty label is altered, damaged or missing.
- D. Product serial number does not conform to ADATA's records, or is difficult to ascertain.

本保固条款不适用于因人为因素或非自然耗损所造成的威刚产品损坏。但不包括以下情形：

- A、因天灾等不可抗力因素，或人为不当操作等因素所致之损坏。
- B、该产品经过非威刚科技授权之技术人员维修或拆装。
- C、该产品上的保固卷标或防拆卷标被更改、破损或遗失。
- D、产品序号不符或序号破损、模糊不清。

以下为各产品线不予保固之标准：

The following conditions are exempt from coverage under the product warranty :

- MODULE 内存模块
- SSD - Solid State Drives 固态硬盘
- XPG Earphone 耳机

# LIMITED WARRANTY STATEMENT

## MODULE 内存模块

### Warranty Label Issue 保固标签异常

Alteration, removal and illegible of the type or unreadable serial number of the Product./ Product serial number does not conform to ADATA's records, or is difficult to ascertain 条形码标签污损或不清，边角有折入、掀起或明显皱褶现象或贴纸破损现象。



Label tilted or seems has been altered. 标签贴纸翘起，有撕过痕迹或贴纸疑似被更换过的。



ADATA warranty label missing 保固标签贴纸遗失



Not ADATA's product ; Warranty label doesn't match with actual product 标签贴纸与产品实物规格不符


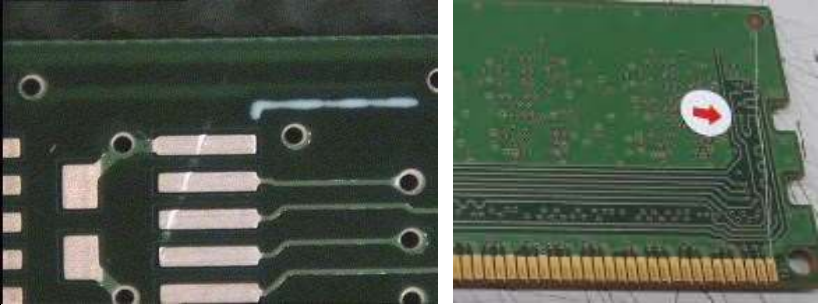


LIMITED WARRANTY STATEMENT

Customer induced damaged : part(s)	
<p>Customer induced damaged: Parts Missing or/and damaged, such as capacitor.</p> <p>零件人为损坏或掉落 (包含电容、电阻、电杆、IC 等零件)</p>	
<p>Component broken IC 破损</p>	
<p>Component Shedding or missing</p> <p>IC 掉落或是移位</p>	



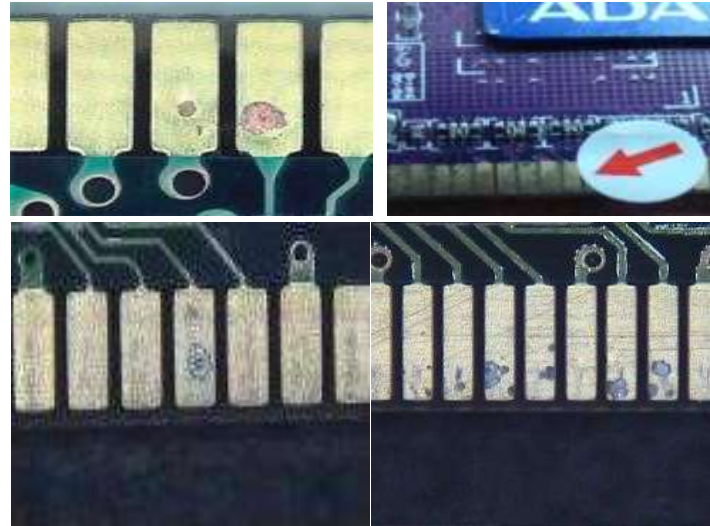
LIMITED WARRANTY STATEMENT

Customer induced damaged : PBC	
Board edge delaminated Improper pre-installation and transport and/or stress caused by dropping, stepping on, or otherwise mishandling the module during installation. 角边损坏 (包含在安装过程中不慎磨损的部分, 或是掉落等不当的人为操作导致的损伤或是 PCB 版分层现象)。	
PCB board damaged or scratched PCB 板刮伤 (包含在金属部分或是板面)	
PCB Bending PCB 板弯曲	
PCB Broken PCB 板 破裂	

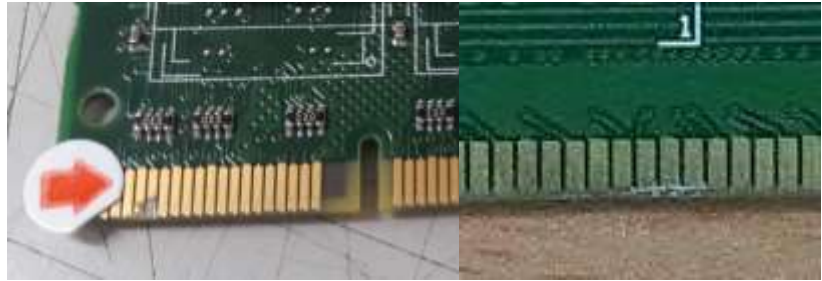
# LIMITED WARRANTY STATEMENT

## Customer induced damaged: Connector (golden finger)

Connector erosion due to humidity or exposure to environment beyond product specifications.  
金手指金属异常，包含沾锡、损伤、严重损伤至露出铜面



Deep connector scratches  
Connector scratching / corrosion  
金手指金属部分严重损伤及裂痕。



Connector burning (possible accompanied by PCB overheating).  
金手指金属因不当操作造成烧板异常



Connector scratched and corrosive 金手指金属部分有腐蚀性现象。



Repair of or modifications to the ADATA Modules not approved, authorized, or performed by ADATA.  
该产品经过非威刚科技授权之技术人员维修或拆装，或产生的痕迹。





# LIMITED WARRANTY STATEMENT

## SSD – SOLID STATE DRIVES 固态硬盘

Out of warranty (according to the warranty label)/  
Product serial number does not conform to ADATA's  
records, or is difficult to ascertain.

依产品序号判定为过保固期之产品、序号贴纸磨  
损致无法辨识序号及产品型号、或是序号非威刚  
编码。



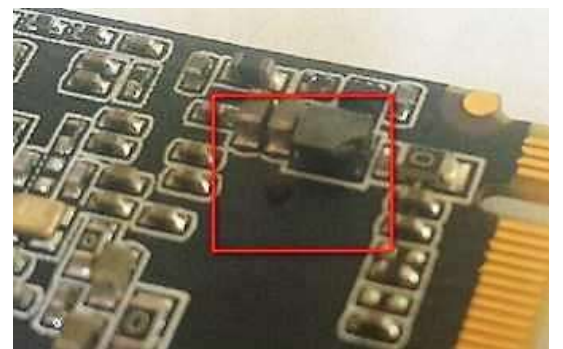
Physical damage on the housing /Housing has  
concave or convex mark.

产品外壳因外力造成凹陷现象



Parts missing or damaged.

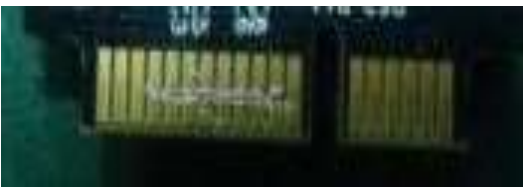
产品表面零件因使用不当造成损坏，颗粒破损或  
裂痕现象。



## LIMITED WARRANTY STATEMENT

### Connector damaged

金手指接头、插槽损坏或异常，



Repair of or modifications to the ADATA SSD not approved, authorized, or performed by ADATA.

该产品经过非威刚科技授权之技术人员维修自行拆装，或产生的痕迹。



## LIMITED WARRANTY STATEMENT

Component has been altered /  
Repair of or modifications to the ADATA SSDs not  
approved, authorized, or performed by ADATA.  
产品零件曾被非威刚授权之人员进行拆解或维  
修过。



Physical damage caused by dropping.  
产品因不慎掉落而造成的损坏，或安装使用过  
程不当造成损坏,例如接头断裂。





# LIMITED WARRANTY STATEMENT

## XPG Earphone XPG 系列耳机

### Warranty issue 保固标签问题

- 1) Out of warranty (according to the warranty label)/ Product serial number does not conform to ADATA's records, or is difficult to ascertain.
- 2) Warranty label missing
- 1) 依产品序号判定为过保固期之产品、序号贴纸磨损致无法辨识序号及产品型号、或是序号非威刚编码。
- 2) 保固贴纸撕除



LIMITED WARRANTY STATEMENT

Customer Induced Damage – 人损

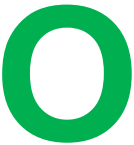
Physical damaged  
因外力产生的人损现象



Return with complete unit 退回完整包装

Products must be returned back in its original condition complete with all accessories. ADATA’s warranty service is not covered with any missing accessory of the unit.  
请返回完整包产品，包含新品所附之所有配件。如有缺件，恕不予提供保固。

H30



XPG PRECOG

