

LIMITED WARRANTY STATEMENT

This warranty will not apply under these circumstances:

- (1) Malfunctions or damage that is caused by natural disasters, accidents, acts of vandalism, and improper use (products not used in accordance with the product's description, product design, or as a fixture or for testing purposes, such as continuous plugging and unplugging, etc.), improper installation (e.g. on equipment that is not compatible or not in compliance with the product's design, etc.), etc.)
- (2) Products that have been damaged due to misuse, neglect, unauthorized disassembly, modifications, or alterations.
- (3) Product damage caused by abnormal mechanical or environmental conditions or power problems such as insufficient voltage, excessive and unstable power supplies, or excessive charging of lithium batteries.
- (4) Product serial number, barcode or label is inconsistent with the original or not visually identifiable to confirm the authenticity of the product, including having been modified, smeared, removed, damaged, lost.

本保固條款不適用於以下情形：

- (1) 因天然災害、意外事故、人為破壞、不當使用（如未依產品說明使用、其使用超出產品設計目的範圍、或用於治具、或使用做插拔等測試用途等等）、不當安裝（如於不相容或不符合威剛產品設計之設備上使用等）所造成的產品損壞。
- (2) 使用者濫用、誤用、疏忽、未經授權自行拆卸修理、擅自修改或變更零件所造成的產品損壞。
- (3) 不正常的機械或環境狀態或電源問題（如伏特數不足、過量與不穩定的電源供應或鋰電池長時間充電等）所造成的產品損壞。
- (4) 產品序號、條碼或標籤遭修改、塗抹或移除、與原本不相符、破損、遺失、不清楚或外觀損毀、無法辨識產品真偽、以及判定為仿冒假品者。

以下為各產品線不予保固之標準：

The following conditions are exempt from coverage under the product warranty :

- MODULE 記憶體模組-----2
- UFD 隨身碟-----6
- CARD 快閃記憶卡-----8
- HDD 外接式硬碟-----10
- SSD - Solid State Drives 固態硬碟-----14
- Power Bank 行動電源-----18
- Mobile Accessories - Cable 傳輸線-----20
- XPG Earphone 耳機-----21
- PC Components 電腦零組件-----23
- Keyboard 鍵盤-----26
- LIGHTING 照明-----27

LIMITED WARRANTY STATEMENT

MODULE 記憶體模組

Warranty Label Issue 保固標籤異常

Alteration, removal and illegible of the type or unreadable serial number of the Product./ Product serial number does not conform to ADATA's records, or is difficult to ascertain
條碼標籤污損或不清，邊角有折入、掀起或明顯皺褶現象或貼紙破損現象。



Label tilted or seems has been altered.
標籤貼紙翹起，有撕過痕跡或貼紙疑似被更換過的。



ADATA warranty label missing
保固標籤貼紙遺失



Not ADATA's product ; Warranty label doesn't match with actual product
標籤貼紙與產品實物規格不符

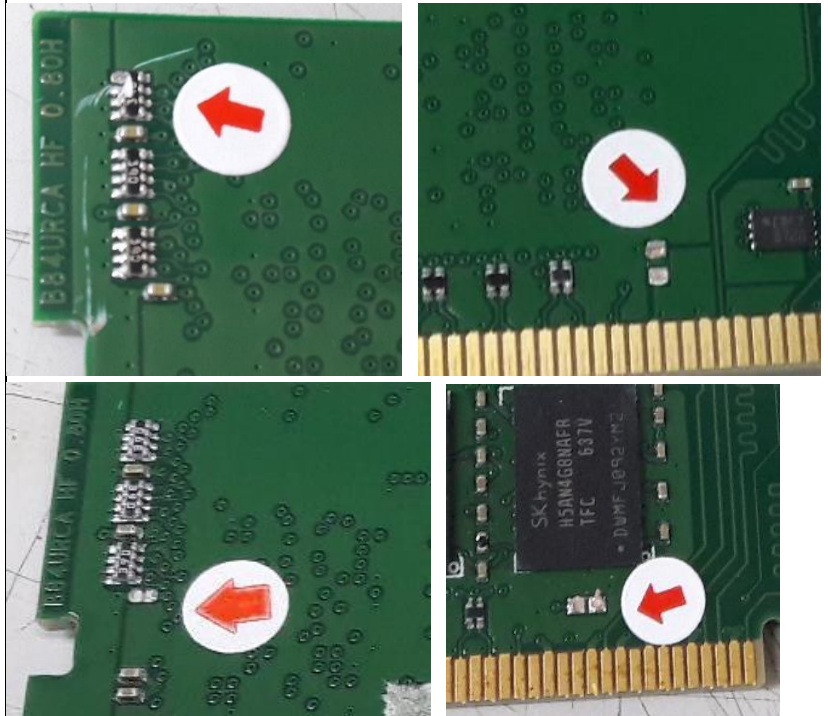


LIMITED WARRANTY STATEMENT

Customer induced damaged 客戶引起的損壞：零件

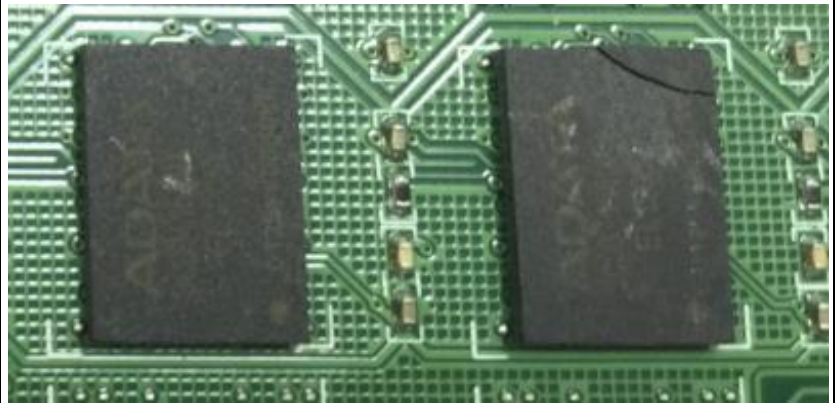
Customer induced damaged: Parts Missing or/and damaged, such as capacitor.

零件人損損壞或掉落 (包含電容、電阻、電
桿、IC 等零件



Component broken

IC 破損



Component Shedding or missing

IC 掉落或是移位



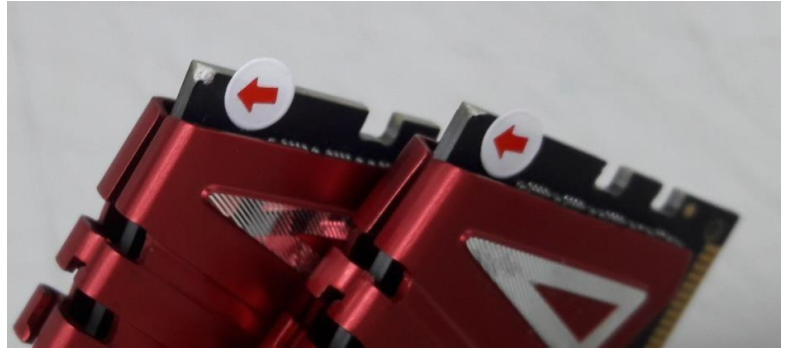
LIMITED WARRANTY STATEMENT

Customer induced damaged : PCB 客戶引起的損壞 PCB 版

Board edge delaminated

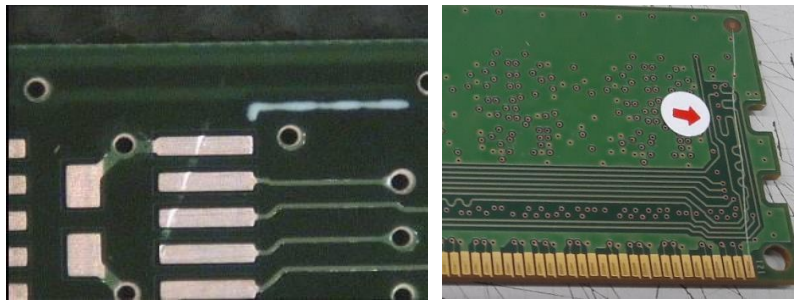
Improper pre-installation and transport and/or stress caused by dropping, stepping on, or otherwise mishandling the module during installation.

角邊損壞 (包含在安裝過程中不慎磨損的部分，或是掉落等不當的人為操作導致的損傷或是 PCB 版分層現象)。



PCB board damaged or scratched

PCB 板刮傷 (包含在金屬部分或是板面)



PCB Bending

PCB 板彎曲



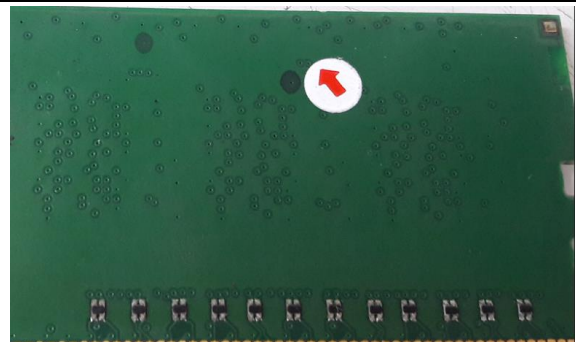
PCB Broken

PCB 板 破裂



PCB Oxidation

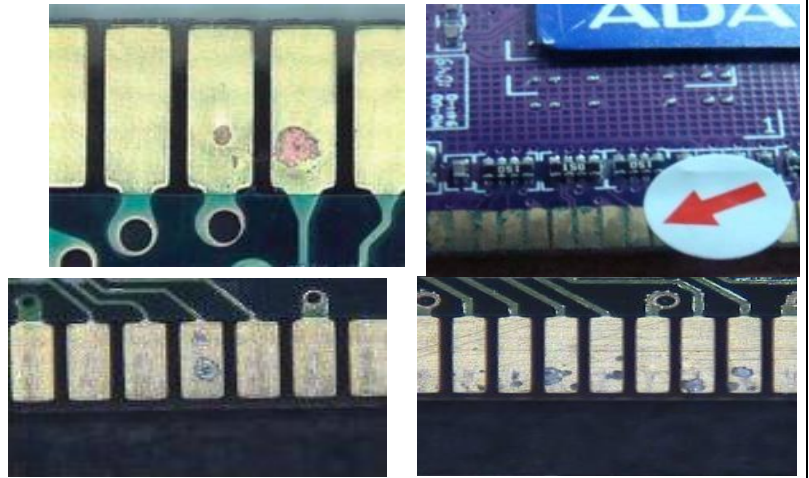
PCB 氧化



LIMITED WARRANTY STATEMENT

Customer induced damaged: Connector (golden finger) 客戶引起的損壞金手指

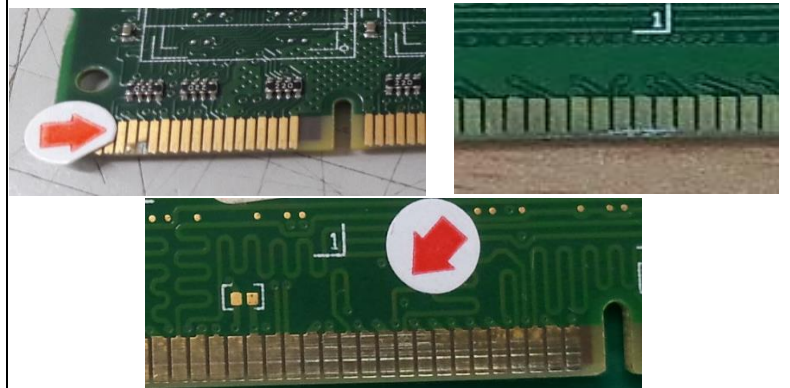
Connector erosion due to humidity or exposure to environment beyond product specifications.
金手指金屬異常，包含沾錫、損傷、嚴重損傷至露出銅面、



Connector burning (possible accompanied by PCB overheating).
金手指金屬因不當操作造成燒板異常



Deep connector scratches
Connector scratching / corrosion
金手指金屬部分嚴重損傷及裂痕



Connector scratched and corrosive 金手指金屬部分有腐蝕性現象。



Repair of or modifications to the ADATA Modules not approved, authorized, or performed by ADATA.
該產品經過非威剛科技授權之技術人員維修或拆裝，或產生的痕跡。



LIMITED WARRANTY STATEMENT

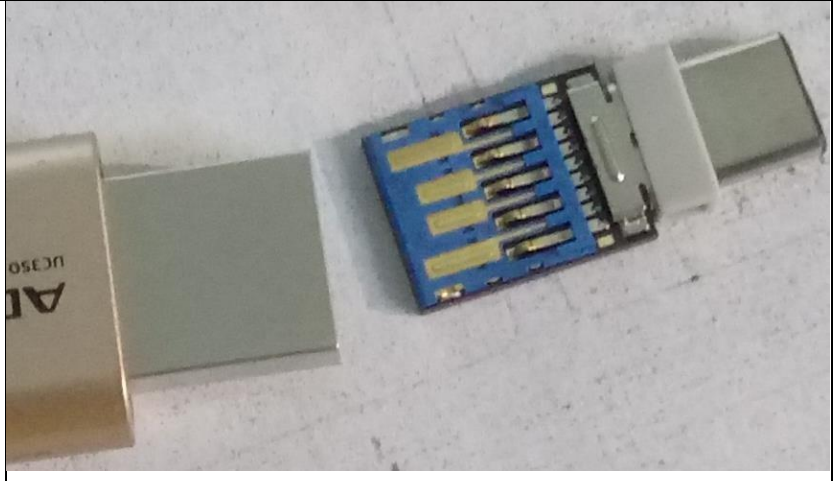
UFD 隨身碟

<p>The connector bend or deformed USB 接頭變形</p>	
<p>Damaged and scratched on the connector or/and SN number and capacity are unrecognized. USB 接頭嚴重刮傷或是磨損無法辨識產品序號。</p>	
<p>USB connector cracked or broken. USB 接頭斷裂</p>	
<p>PCB cracked PCB 板裂傷</p>	
<p>Not ADATA's product - inner parts are not ADATA's - Not ADATA's SN 偽品：實物與產品標示不符、接頭序號非威剛編碼</p>	
<p>Repair of or modifications to the ADATA UFDs not approved, authorized, or performed by ADATA. 該產品經過非威剛科技授權之技術人員維修或拆裝，或產生的痕跡。。</p>	

LIMITED WARRANTY STATEMENT

The housing and product are detached caused by dropping, stepping on, or otherwise mishandling the product during installation.

產品因不慎掉落以致外殼與零件分離現象，及安裝過程中的人為損壞。



LIMITED WARRANTY STATEMENT

CARD 快閃記憶卡

Connector damaged:

Cracked or bending /golden finger oxidized / scratched on golden fingers. 產品刮傷損壞，傷及金手指部分、卡片外殼破損。



Write protect switch cracked.

卡片白色卡榫斷裂或遺失。



Cracked, chipping or damaged on the card 產品斷裂及缺角損傷。



Cover and product detached. 產品零件與外殼分離現象。



LIMITED WARRANTY STATEMENT

<p>Non-commercial item : labeled "Sample". 樣品。</p>	
<p>Repair of or modifications to the ADATA card not approved, authorized, or performed by ADATA. 該產品經過非威剛科技授權之技術人員維修或拆裝，或產生的痕跡。</p>	
<p>Damage derived from unintended use: severe casing abrasion, exposure of components. 產品嚴重損壞及刮傷露出銅面</p>	
<p>Not ADATA's Product / Unrecognized as ADATA's product / The wording on the product doesn't match with the actual product 偽品 / 無法辨識為威剛產品 / 產品印刷標示與實際內容物不符合。</p>	

LIMITED WARRANTY STATEMENT

HDD 外接式硬碟

Out of warranty (according to the warranty label)/
Product serial number does not conform to ADATA's
records, or is difficult to ascertain.

依產品序號判定為過保固期之產品



Warranty label missing 撕除產品保固標籤



Warranty label has been altered. 保固標籤被移除
再重貼。



Inner disk doesn't match with warranty label / inner
disk is not ADATA's.

(product has been replaced by another inner disk)

產品標籤與內部裸碟規格不符合



LIMITED WARRANTY STATEMENT

Physical damaged on the housing 產品外殼損壞。



Housing is concave or convex.

產品外殼表面不平整，有隆起現象



housing has been detached 產品曾被拆裝、解體或是疑似撬開過的痕跡。



Physical damage on the inner disk. 內部裸碟有壞損現象。



LIMITED WARRANTY STATEMENT

Physical induced damaged in the inner disk /
Inner disk has concave or convex mark. 內部裸碟
變形。



Inner disk damaged due to humidity.
內部裸碟因使用環境造成異常現象，如腐蝕、生
鏽等異常現象。



Label on the inner disk has been altered.
內部裸碟上的標籤被移除再重貼



LIMITED WARRANTY STATEMENT

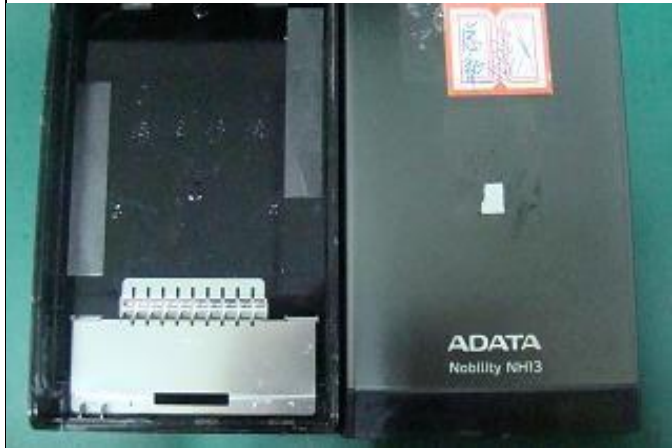
USB hub loosen or broken

USB 頭鬆脫或斷裂



No disk inside the housing

無內部裸碟



Non-commercial item : labeled "Sample".

樣品



LIMITED WARRANTY STATEMENT

SSD - Solid State Drives

Out of warranty (according to the warranty label)/ Product serial number does not conform to ADATA's records, or is difficult to ascertain.

依產品序號判定為過保固期之產品、序號貼紙磨損致無法辨識序號及產品型號、或是序號非威剛編碼。

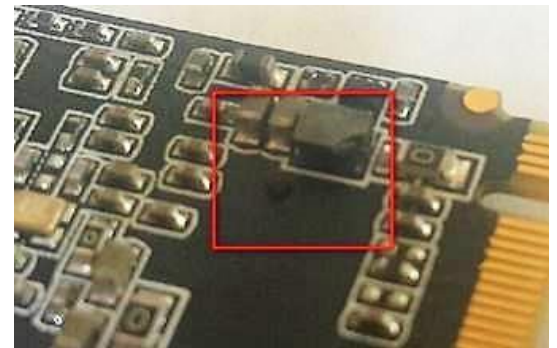


Physical damage on the housing /Housing has concave or convex mark.

產品外殼因外力造成凹陷現象



Parts missing or damaged. 產品零件損壞，顆粒破損或裂痕現象。



If you have an SSD with a heat sink attached, detaching it will void your warranty as it will be considered customer-induced damage.

SSD 固態硬碟本身若帶有散熱片，自行拆卸、移除散熱片後，屬於人為損壞，不予保固。



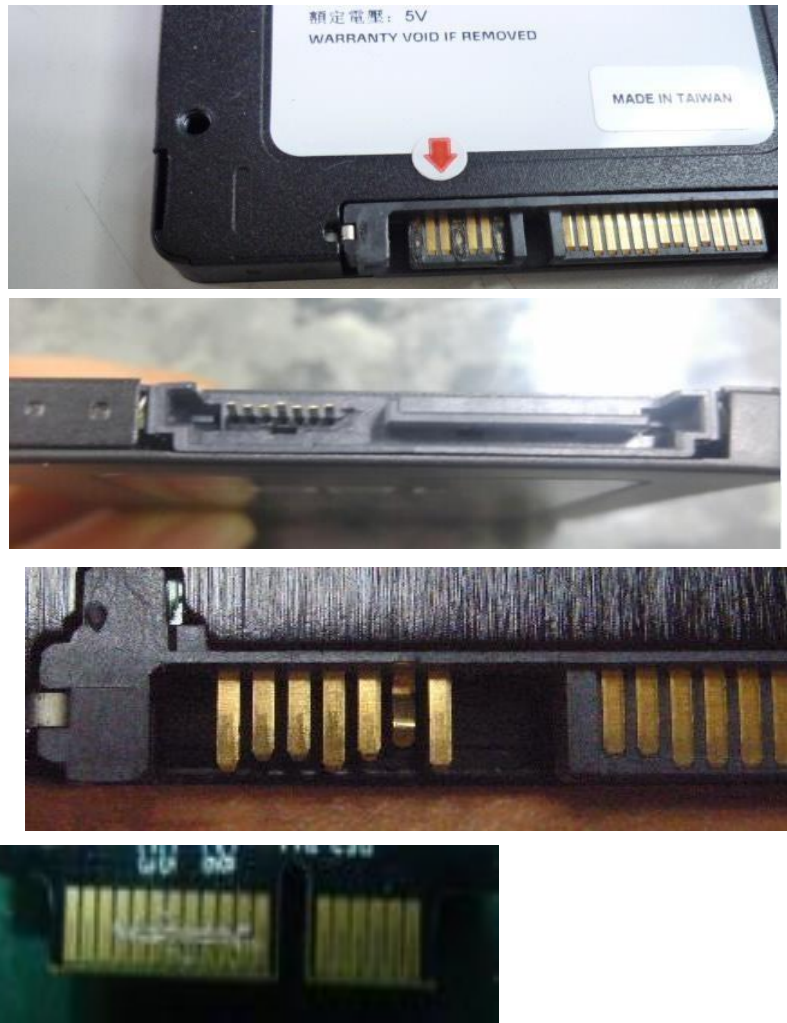
***Out of warranty
Remove the heat sink
(移除散熱片不予保固)**



LIMITED WARRANTY STATEMENT

Connector damaged

金手指接頭、插槽損壞或異常，



Repair of or modifications to the ADATA SSD not approved, authorized, or performed by ADATA.

該產品經過非威剛科技授權之技術人員維修或拆裝，或產生的痕跡。



Component has been altered /
Repair of or modifications to the ADATA SSDs not approved, authorized, or performed by ADATA.

產品零件曾被非威剛授權之人員拆解或維修過。



LIMITED WARRANTY STATEMENT

Physical damage caused by dropping.

產品因不慎掉落而造成的損壞，例如接頭斷裂。



S/N label on screw hole area has torn

螺絲孔保固貼撕毀破損



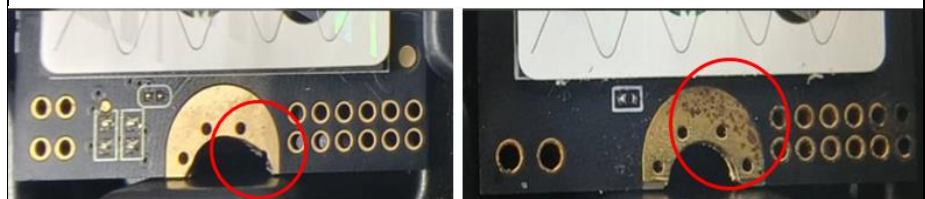
Damaged on corner

邊角損傷



Screw hole has broke or oxidised

M.2 SSD 螺絲孔破裂或生鏽



PCB bare copper

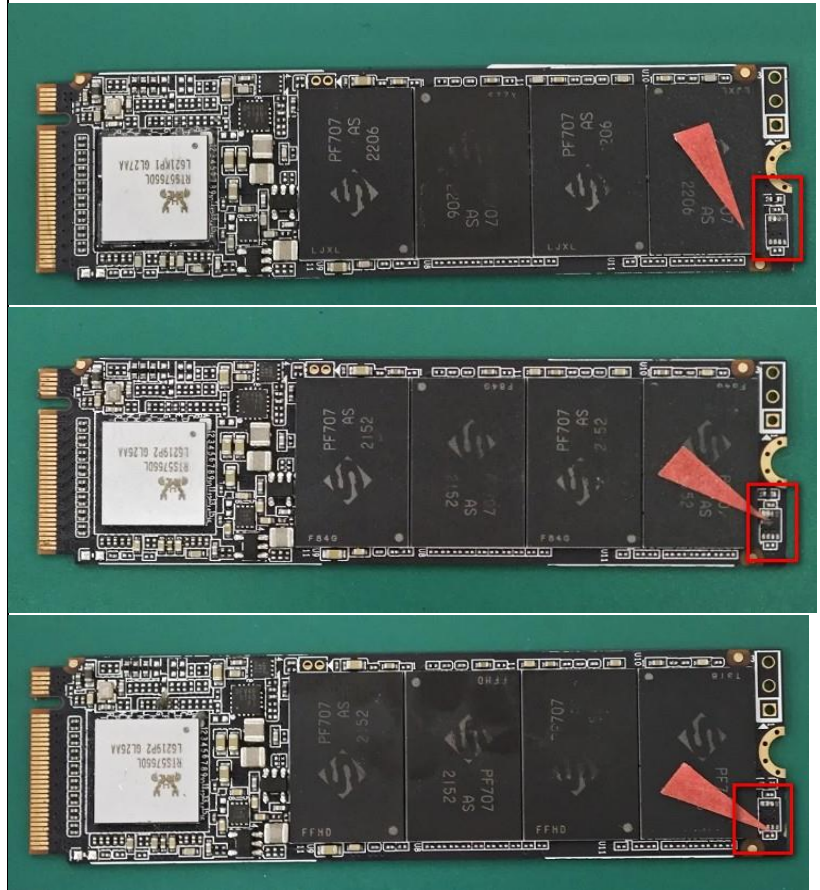
PCB 裸銅



LIMITED WARRANTY STATEMENT

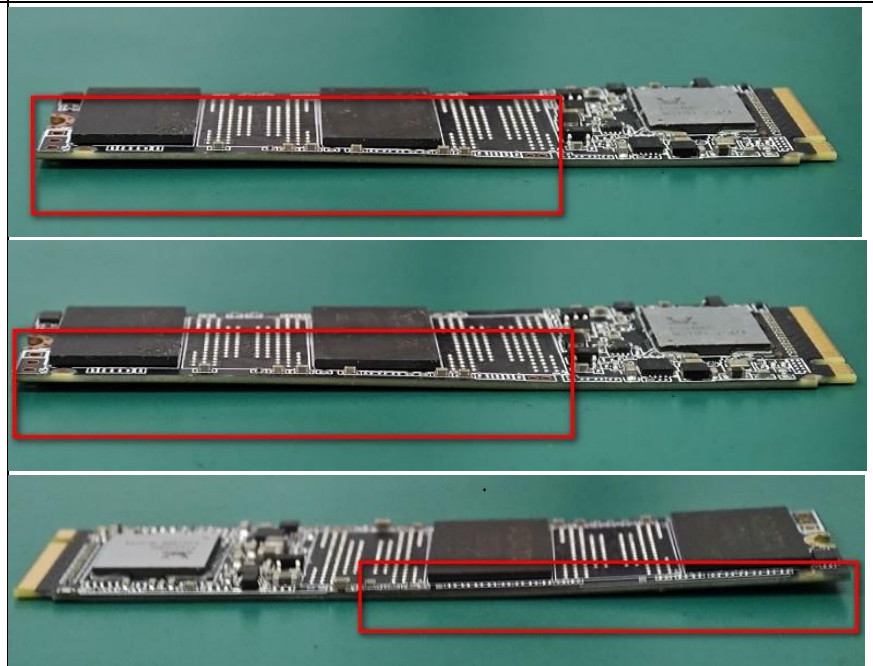
PAD fell off (IC)

PAD 焊盤脫落(零件脫落)



PCB bending and bowing

PCB 板彎變形



LIMITED WARRANTY STATEMENT

POWER BANK

Out of warranty (according to the warranty label)/
Product serial number does not conform to ADATA's
records, or is difficult to ascertain.

依產品序號判定為過保固期之產品、序號貼紙磨
損致無法辨識序號及產品型號、或是序號非威剛
編碼。



Warranty label missing
保固貼紙遺失或被撕除。



Housing has been detached.
產品曾被拆裝、解體或有撬開過的痕跡。



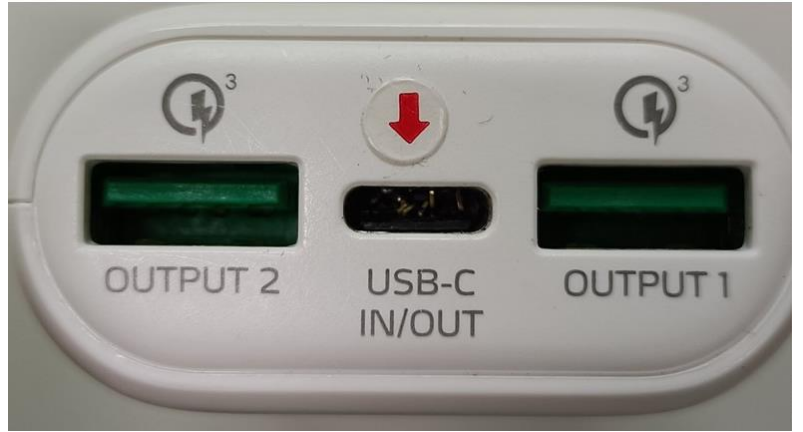
USB port damaged
USB 接口損壞。



LIMITED WARRANTY STATEMENT

USB-C port damaged

USB-C 接口損壞



LIMITED WARRANTY STATEMENT

LIGHTNING CABLE

Customer induced damaged – cracked / bending

Micro USB 接頭遺失、彎折或斷裂



Customer induced damage on the cable

線材因外力變形、磨損或斷裂



Connector missing

Micro USB 接頭遺失



LIMITED WARRANTY STATEMENT

XPG Earphone

XPG 系列耳機

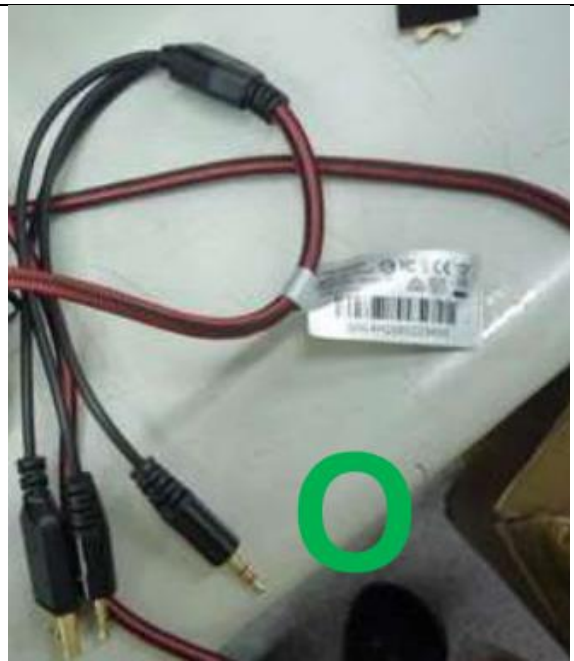
Warranty issue 保固標籤問題

1) Out of warranty (according to the warranty label)/ Product serial number does not conform to ADATA's records, or is difficult to ascertain.

2) Warranty label missing

1) 依產品序號判定為過保固期之產品、序號貼紙磨損致無法辨識序號及產品型號、或是序號非威剛編碼。

2) 保固貼紙撕除



LIMITED WARRANTY STATEMENT

Customer Induced Damage –人損

Physical damaged 因外力產生的人損現象



Return with complete unit 退回完整包裝

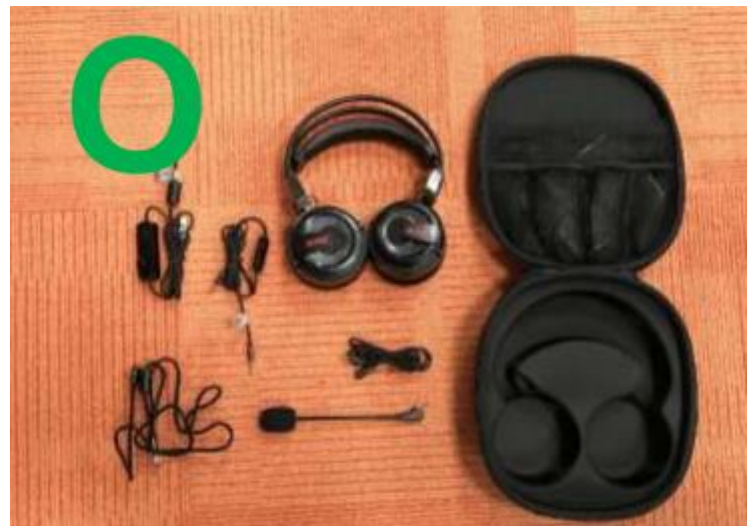
Products must be returned back in its original condition complete with all accessories. ADATA's warranty service is not covered with any missing accessory of the unit.

請返回完整包產品，包含新品所附之所有配件。如有缺件，恕不提供保固。

H30



XPG PRECOG

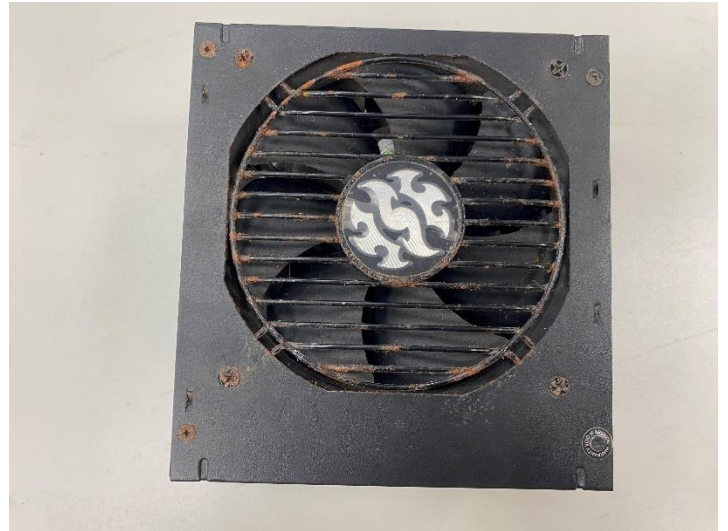
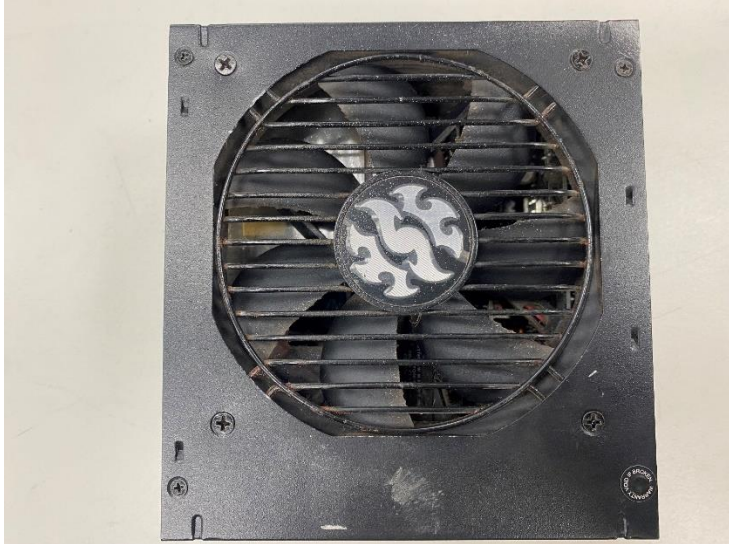


LIMITED WARRANTY STATEMENT

PC Components 電腦零組件

Oxidation / Rusty

生鏽



S/N label on screw hole area has torn

螺絲孔保固標籤損壞



LIMITED WARRANTY STATEMENT

Appearance of product has damaged / shape changed

產品外觀變形



Port or connector burnt

接口燒毀



LIMITED WARRANTY STATEMENT

Missing fan

缺風扇



RADIATOR Oxidation / Rusty

散熱器生鏽



LIMITED WARRANTY STATEMENT

Keyboard 鍵盤

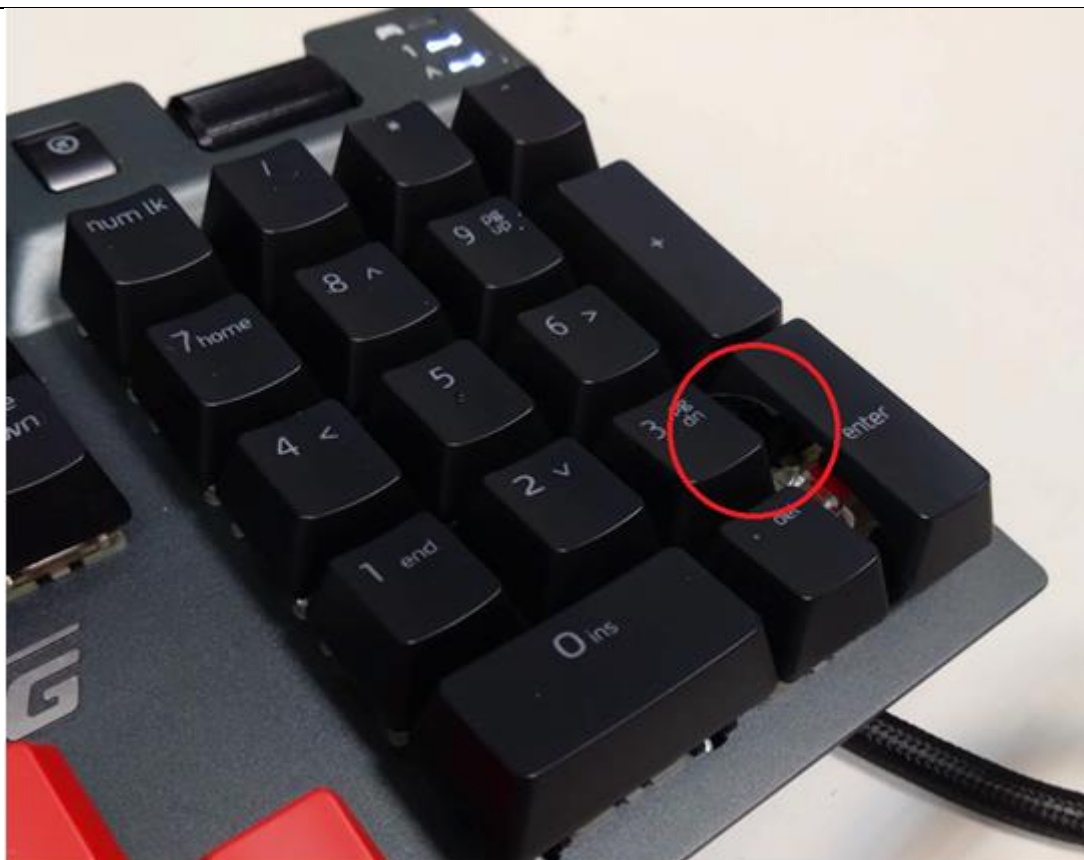
Missing keycap

遺失鍵帽



Keycap broken

按鍵破裂



LIMITED WARRANTY STATEMENT

LIGHTING 照明

Out of warranty

過保



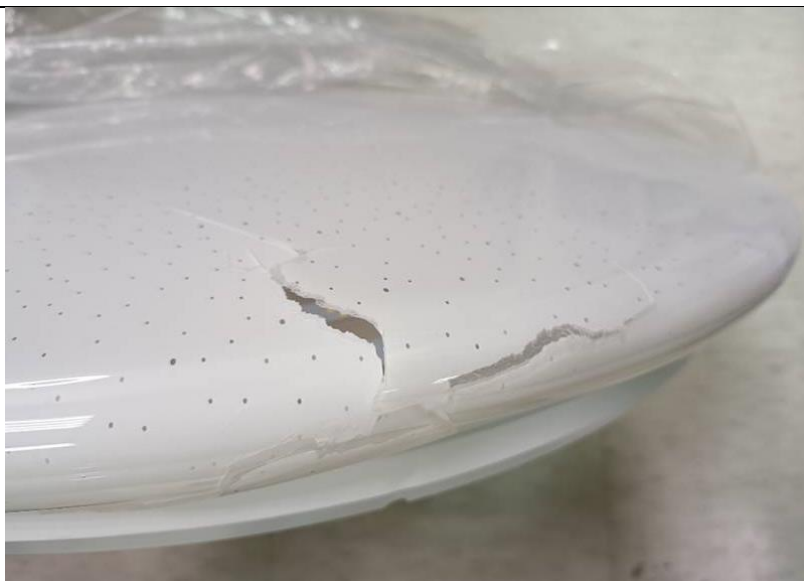
Broke of lamp

檯燈斷裂



Broke of ceiling lamp

吸頂燈破裂



LIMITED WARRANTY STATEMENT

Broke of light bulb /
appearance damaged.

燈泡、燈具破裂，外觀異常



Missing lamp shade /
accessories

吸頂燈缺燈罩，配件不齊全

