

LIMITED WARRANTY STATEMENT

This Warranty does not apply to defects or damages to Products caused by human error-related factors or any other non-ordinary factors, including but not limited to:

- A. Malfunctions or damages caused by force majeure such as natural calamity or any inappropriate use by any person.
- B. Product has been repaired or taken apart by unauthorized technicians.
- C. Warranty label is altered, damaged or missing.
- D. Product serial number does not conform to ADATA's records, or is difficult to ascertain.

本保固條款不適用於因人為因素或非自然耗損所造成的威剛產品損壞。包括但不限於以下情形：

- A、因天災等不可抗力因素，或人為不當操作等因素所致之損壞。
- B、該產品經過非威剛科技授權之技術人員維修或拆裝。
- C、該產品上的保固標籤或防拆標籤被更改、破損或遺失。
- D、產品序號不符或序號破損、模糊不清。

以下為各產品線不予保固之標準：

The following conditions are exempt from coverage under the product warranty :

- MODULE 記憶體模組
- SSD - Solid State Drives 固態硬碟
- XPG Earphone 耳機

LIMITED WARRANTY STATEMENT

MODULE 記憶體模組

Warranty Label Issue 保固標籤異常

Alteration, removal and illegible of the type or unreadable serial number of the Product./ Product serial number does not conform to ADATA's records, or is difficult to ascertain
條碼標籤污損或不清，邊角有折入、掀起或明顯皺褶現象或貼紙破損現象。



Label tilted or seems has been altered.
標籤貼紙翹起，有撕過痕跡或貼紙疑似被更換過的。



ADATA warranty label missing
保固標籤貼紙遺失



Not ADATA's product ; Warranty label doesn't match with actual product
標籤貼紙與產品實物規格不符

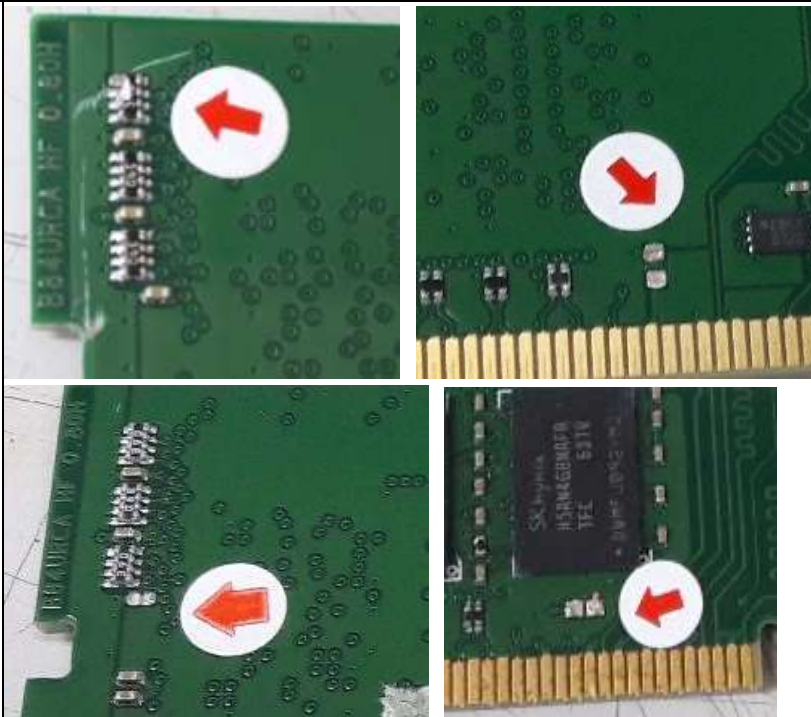


LIMITED WARRANTY STATEMENT

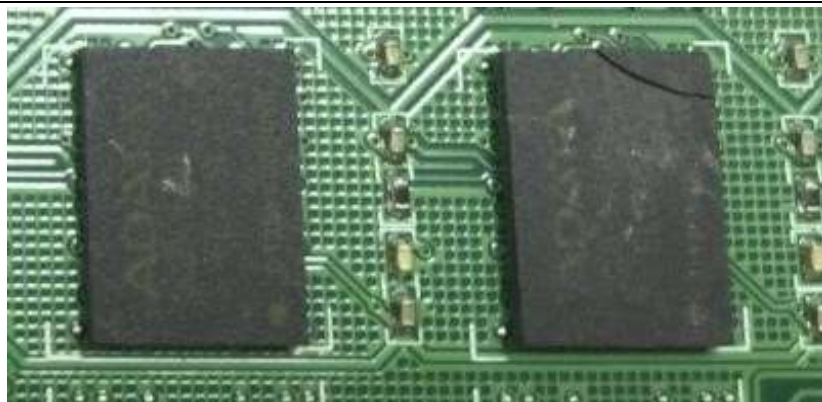
Customer induced damaged : part(s)

Customer induced damaged: Parts Missing or/and damaged, such as capacitor.

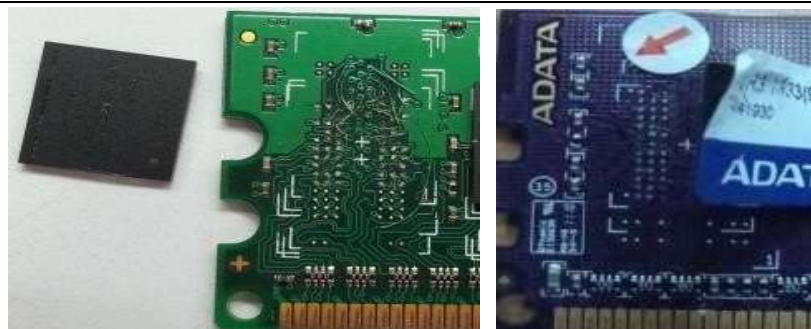
零件人損損壞或掉落 (包含電容、電阻、電
桿、IC 等零件)



Component broken IC 破損



Component Shedding or missing
IC 掉落或是移位



LIMITED WARRANTY STATEMENT

Customer induced damaged : PBC

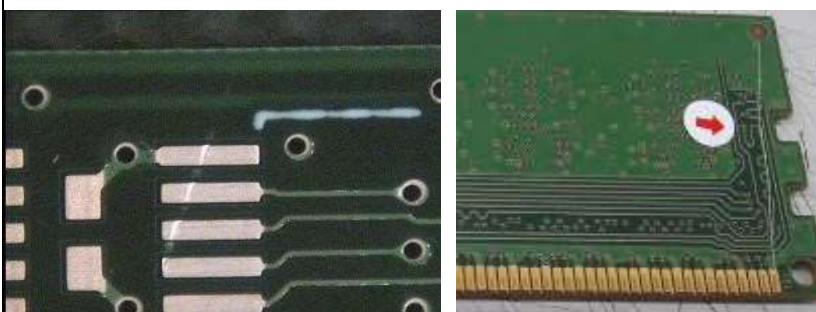
Board edge delaminated
Improper pre-installation and transport and/or stress caused by dropping, stepping on, or otherwise mishandling the module during installation.

角邊損壞 (包含在安裝過程中不慎磨損的部分，或是掉落等不當的人為操作導致的損傷或是 PCB 版分層現象)。



PCB board damaged or scratched

PCB 板刮傷 (包含在金屬部分或是板面)



PCB Bending

PCB 板彎曲



PCB Broken

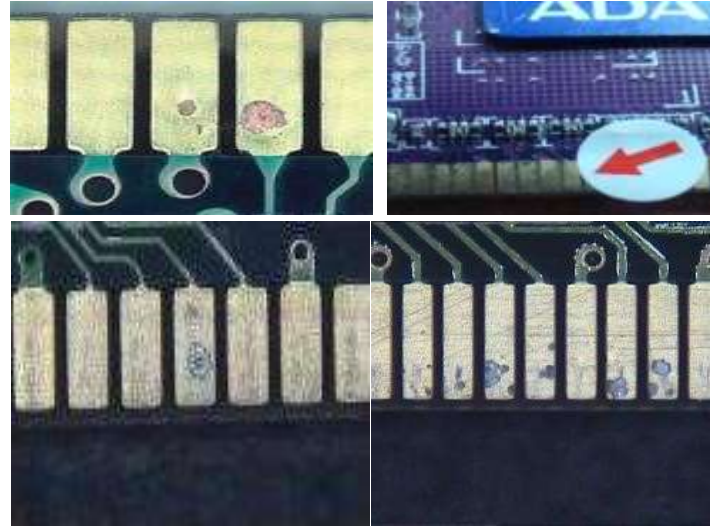
PCB 板 破裂



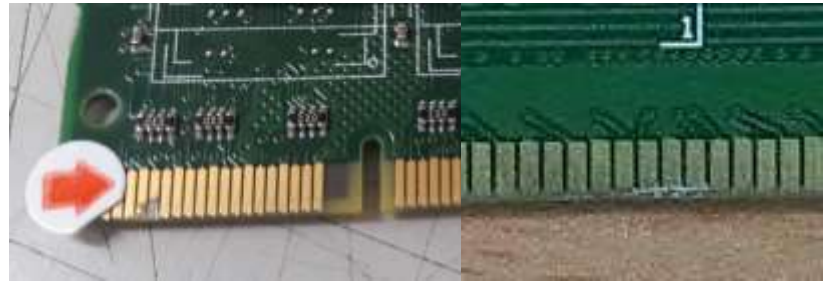
LIMITED WARRANTY STATEMENT

Customer induced damaged: Connector (golden finger)

Connector erosion due to humidity or exposure to environment beyond product specifications.
 金手指金屬異常，包含沾錫、損傷、嚴重損傷至露出銅面



Deep connector scratches
 Connector scratching / corrosion
 金手指金屬部分嚴重損傷及裂痕。



Connector burning (possible accompanied by PCB overheating).
 金手指金屬因不當操作造成燒板異常



Connector scratched and corrosive 金手指金屬部分有腐蝕性現象。



LIMITED WARRANTY STATEMENT

Repair of or modifications to the ADATA Modules not approved, authorized, or performed by ADATA.
該產品經過非威剛科技授權之技術人員維修或拆裝，或產生的痕跡。



LIMITED WARRANTY STATEMENT

SSD – SOLID STATE DRIVES 固態硬碟

Out of warranty (according to the warranty label)/
Product serial number does not conform to ADATA's
records, or is difficult to ascertain.

依產品序號判定為過保固期之產品、序號貼紙磨
損致無法辨識序號及產品型號、或是序號非威剛
編碼。

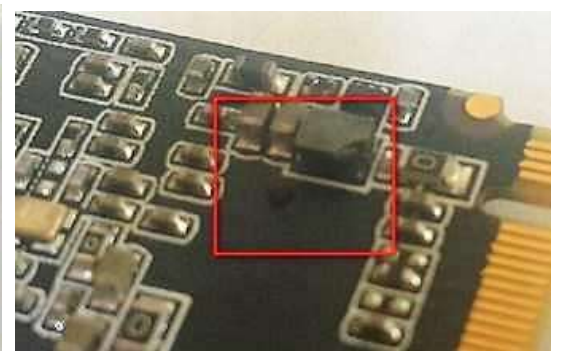


Physical damage on the housing /Housing has
concave or convex mark.

產品外殼因外力造成凹陷現象



Parts missing or damaged. 產品零件損壞、顆粒破
損或裂痕現象。



LIMITED WARRANTY STATEMENT

Connector damaged

金手指接頭、插槽損壞或異常，



Repair of or modifications to the ADATA SSD not approved, authorized, or performed by ADATA.

該產品經過非威剛科技授權之技術人員維修或拆裝，或產生的痕跡。



LIMITED WARRANTY STATEMENT

Component has been altered /
Repair of or modifications to the ADATA SSDs not
approved, authorized, or performed by ADATA.
產品零件曾被非威剛授權之人員拆解或維修
過。



Physical damage caused by dropping.
產品因不慎掉落而造成的損壞，例如接頭斷
裂。



LIMITED WARRANTY STATEMENT

XPG Earphone XPG 系列耳機

Warranty issue 保固標籤問題

- 1) Out of warranty (according to the warranty label)/ Product serial number does not conform to ADATA's records, or is difficult to ascertain.
 - 2) Warranty label missing
- 1) 依產品序號判定為過保固期之產品、序號貼紙磨損致無法辨識序號及產品型號、或是序號非威剛編碼。
- 2) 保固貼紙撕除



LIMITED WARRANTY STATEMENT



Customer Induced Damage – 人損

Physical damaged

因外力產生的人損現象



LIMITED WARRANTY STATEMENT

Return with complete unit 退回完整包裝

Products must be returned back in its original condition complete with all accessories. ADATA's warranty service is not covered with any missing accessory of the unit.

請返回完整包產品，包含新品所附之所有配件。如有缺件，恕不予提供保固。

H30



XPG PRECOG

